

Wallaga Beach (Lake entrance)



Office of
Environment
& Heritage



Water
Research
Laboratory
School of Civil and
Environmental Engineering

-  Erosion 2010
-  Erosion 2050
-  Erosion 2100



250 m



Haywards/Camel Rock Beach (north)

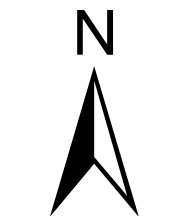


Office of
Environment
& Heritage

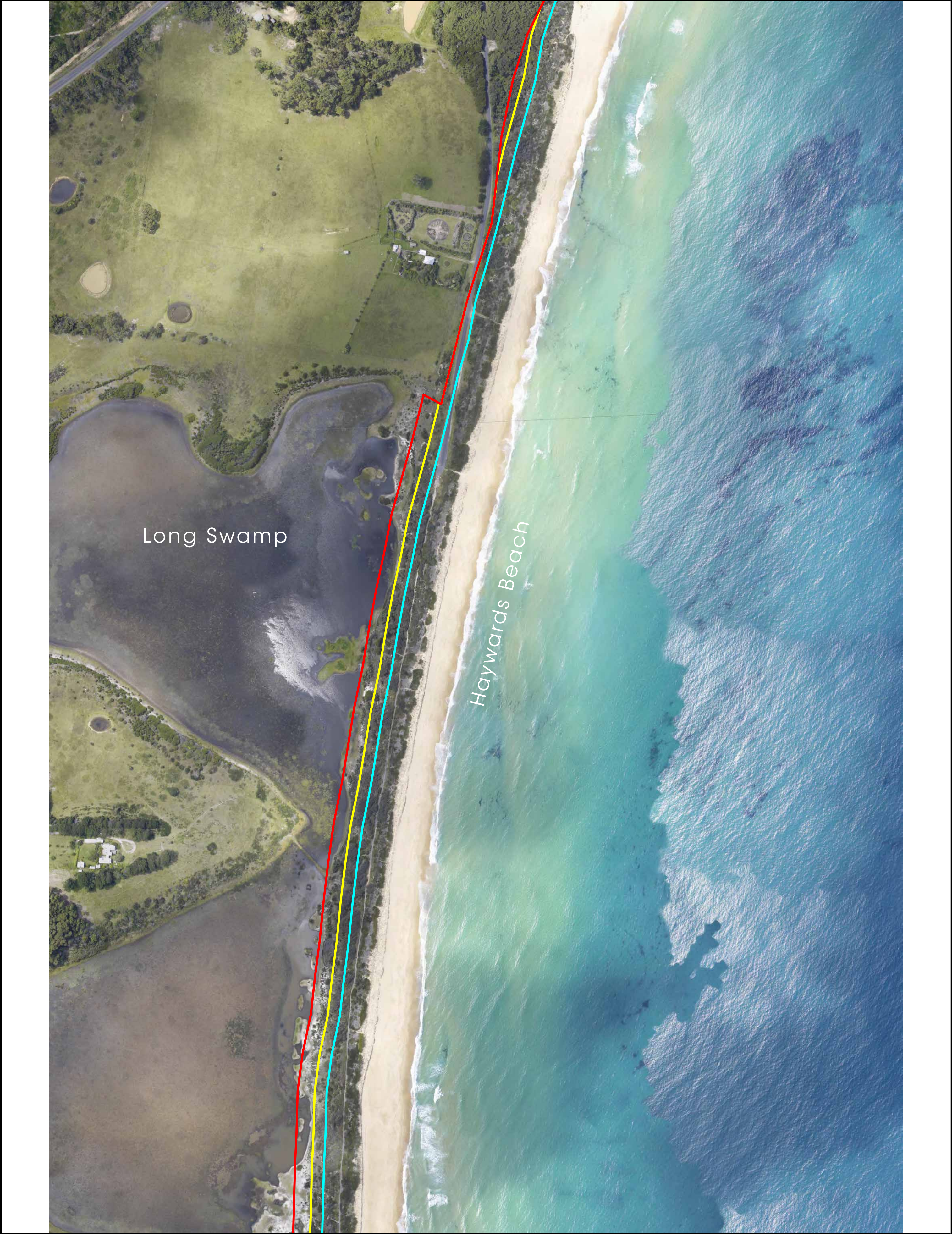


Water
Research
Laboratory
School of Civil and
Environmental Engineering

-  Erosion 2010
-  Erosion 2050
-  Erosion 2100



250 m



Haywards Beach

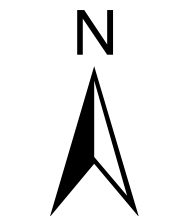


Office of
Environment
& Heritage

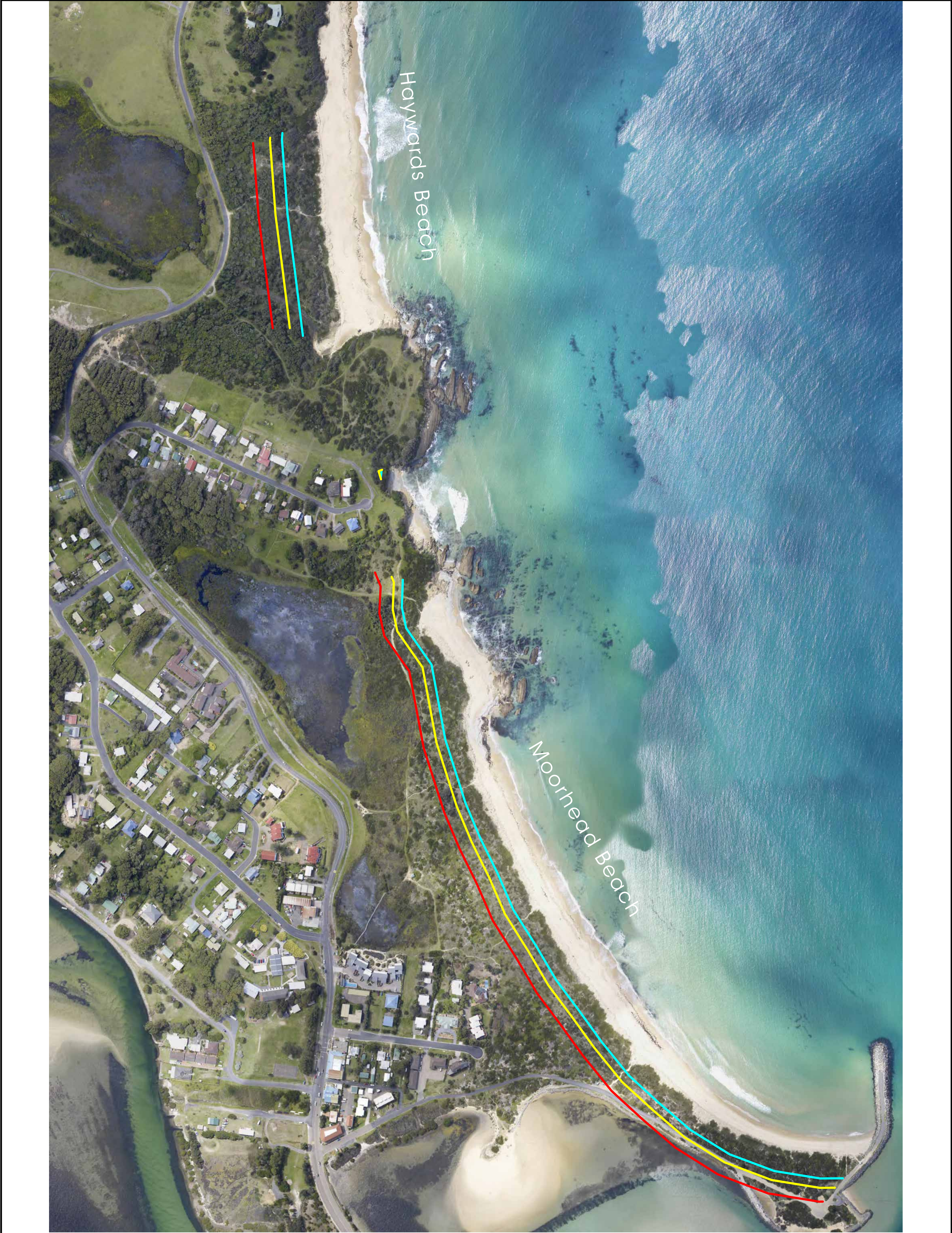


Water
Research
Laboratory
School of Civil and
Environmental Engineering

-  Erosion 2010
-  Erosion 2050
-  Erosion 2100



250 m



Moorhead Beach

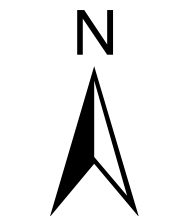


Office of
Environment
& Heritage

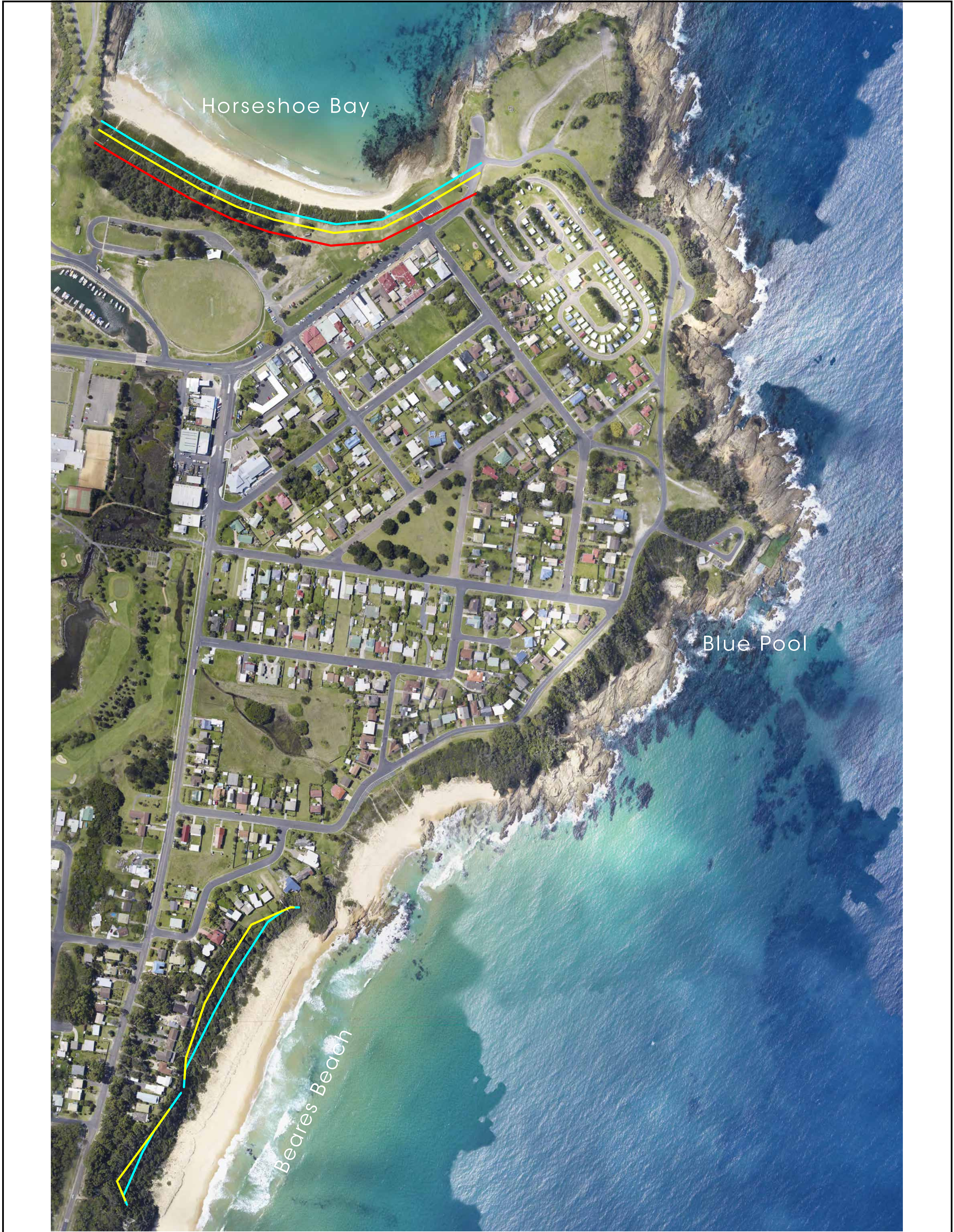


Water
Research
Laboratory
School of Civil and
Environmental Engineering

- Erosion 2010
- Erosion 2050
- Erosion 2100



250 m



Horseshoe Bay - Beares Beach

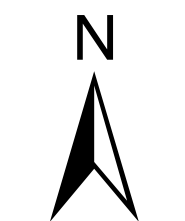


Office of
Environment
& Heritage

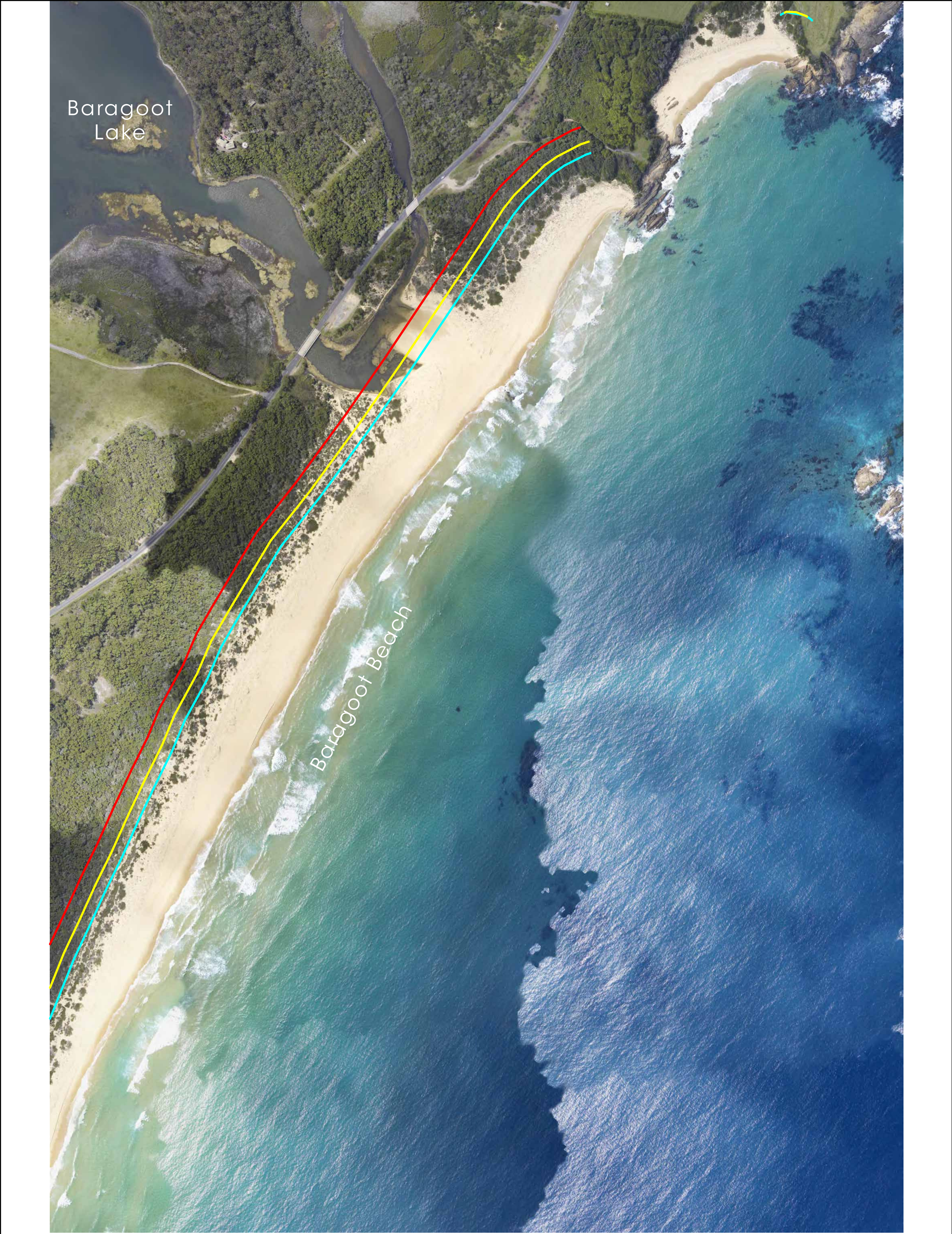


Water
Research
Laboratory
School of Civil and
Environmental Engineering

- Erosion 2010
- Erosion 2050
- Erosion 2100



250 m



Baragoot Beach

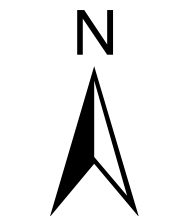


Office of
Environment
& Heritage



Water
Research
Laboratory
School of Civil and
Environmental Engineering

-  Erosion 2010
-  Erosion 2050
-  Erosion 2100



250 m



Baragoot Beach (south)



Office of
Environment
& Heritage

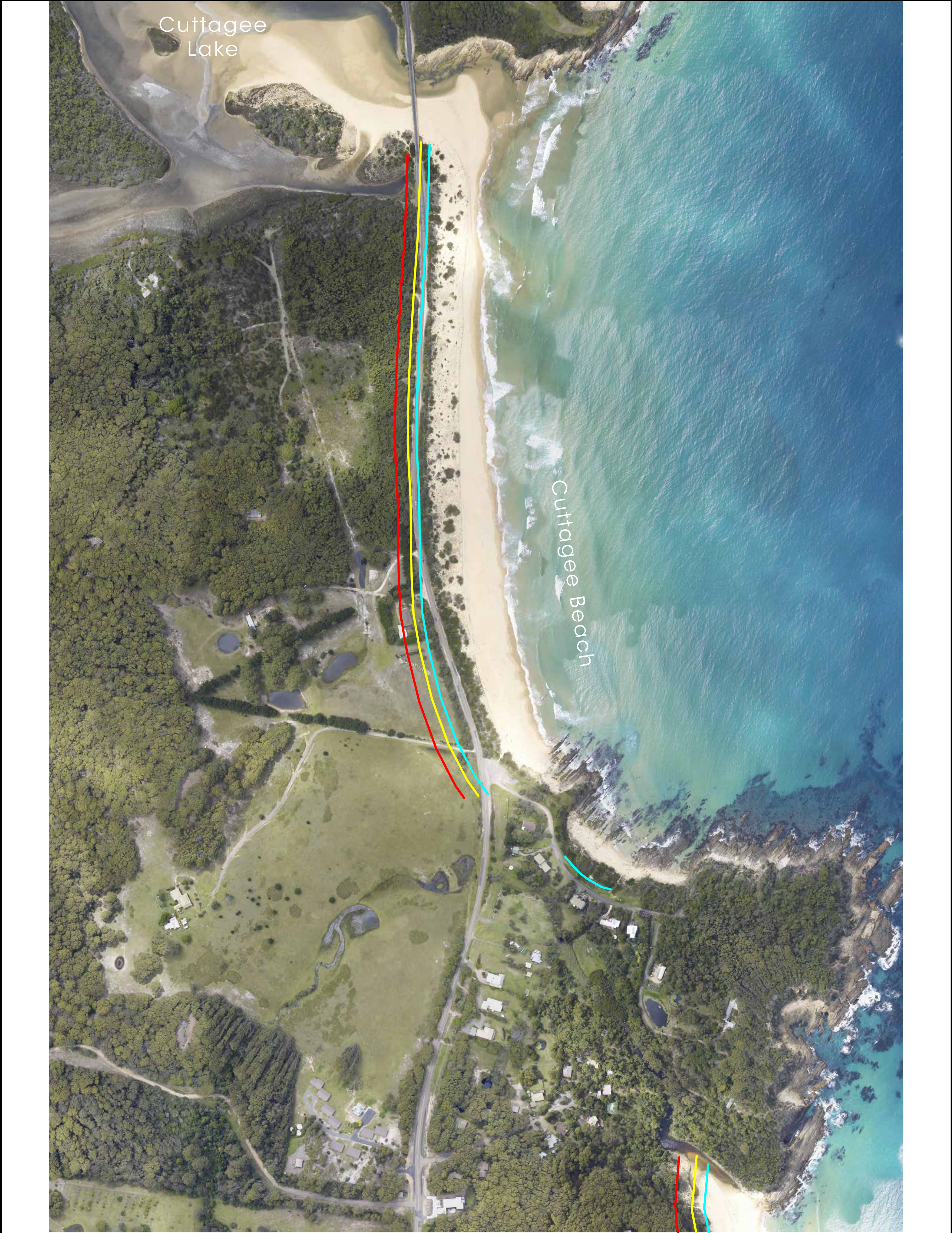


Water
Research
Laboratory
School of Civil and
Environmental Engineering

-  Erosion 2010
-  Erosion 2050
-  Erosion 2100



250 m



Cuttagee Beach

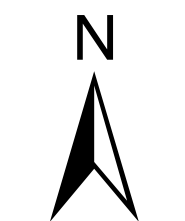


Office of
Environment
& Heritage



Water
Research
Laboratory
School of Civil and
Environmental Engineering

- Erosion 2010
- Erosion 2050
- Erosion 2100



250 m



Barragga Bay and Armands Bay



Office of
Environment
& Heritage

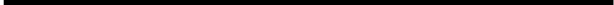


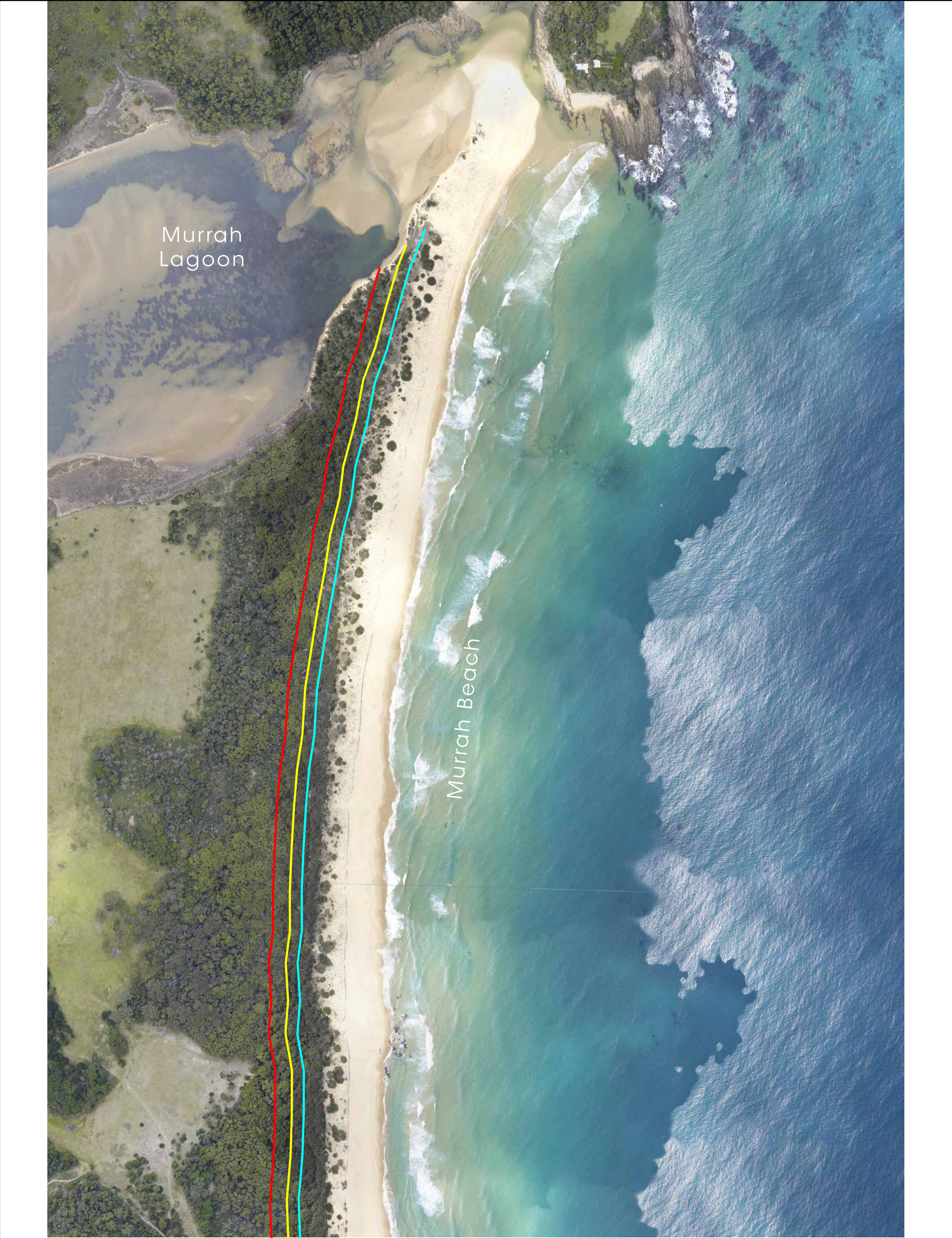
Water
Research
Laboratory
School of Civil and
Environmental Engineering

- Erosion 2010
- Erosion 2050
- Erosion 2100



250 m





Murrah Beach



Office of
Environment
& Heritage



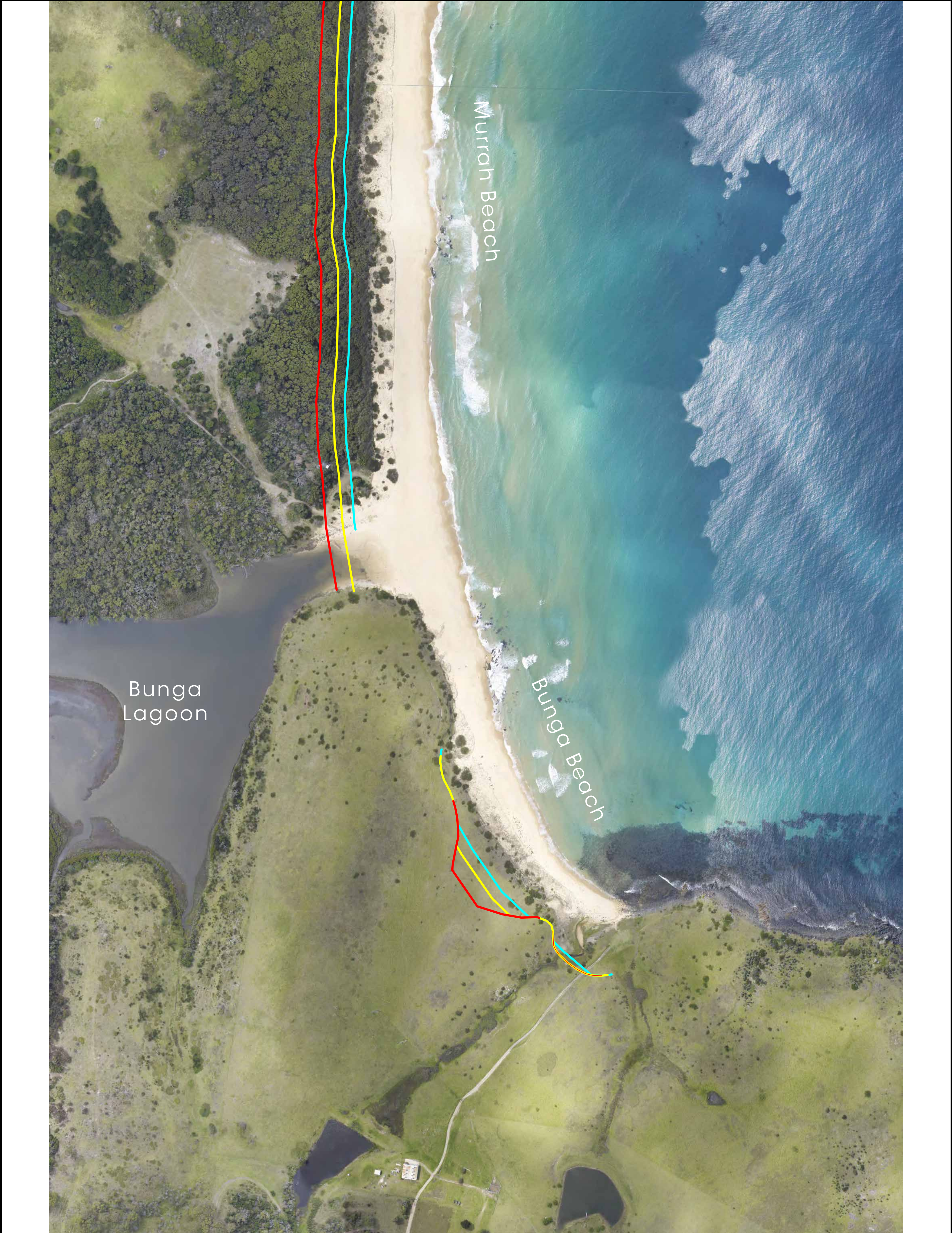
Water
Research
Laboratory
School of Civil and
Environmental Engineering

-  Erosion 2010
-  Erosion 2050
-  Erosion 2100



250 m





Bunga Beach

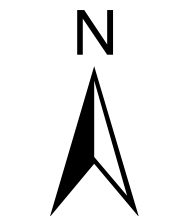


Office of
Environment
& Heritage

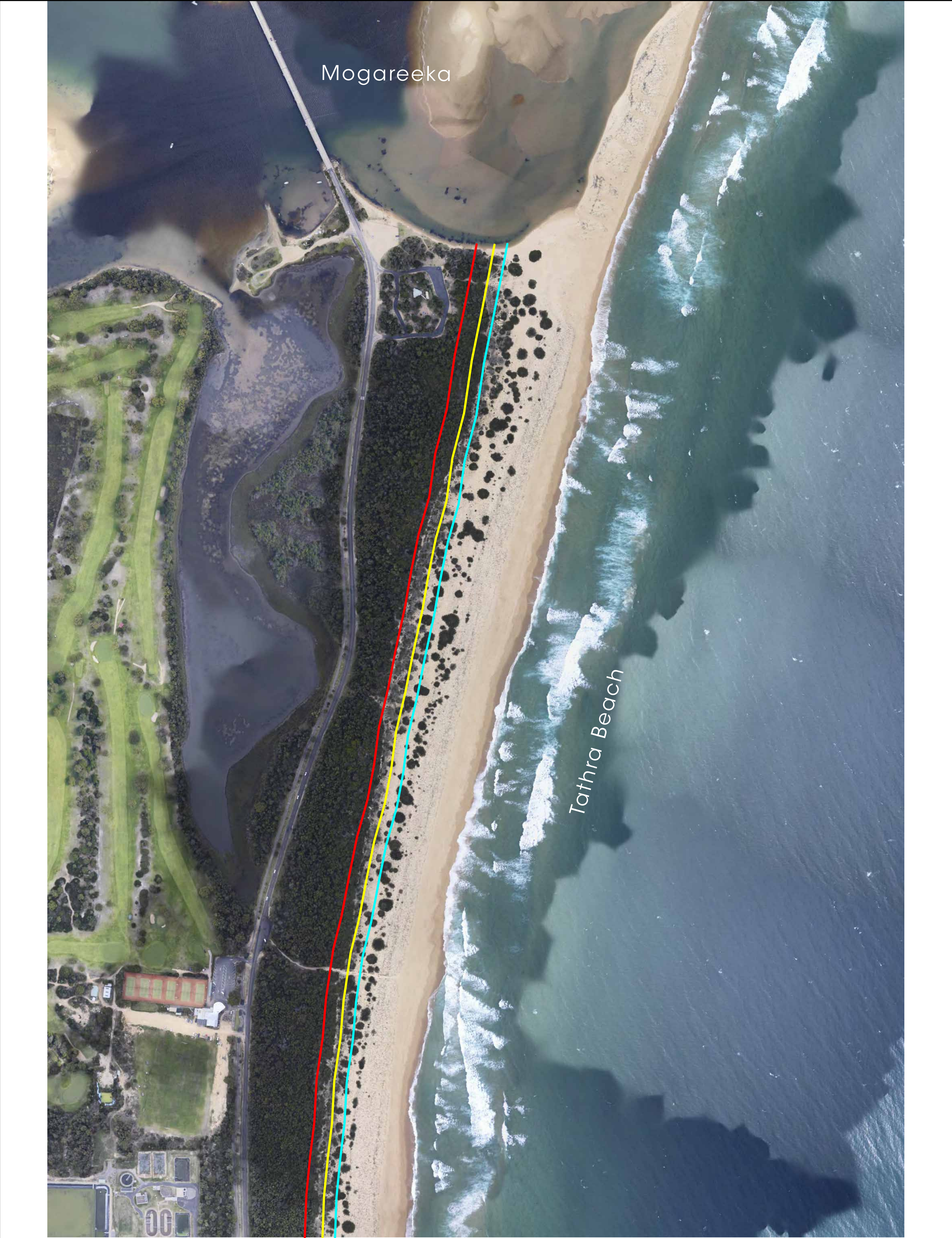


Water
Research
Laboratory
School of Civil and
Environmental Engineering

- Erosion 2010
- Erosion 2050
- Erosion 2100

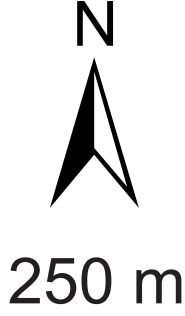


250 m



Tathra Beach (north)

- Erosion 2010
- Erosion 2050
- Erosion 2100



Office of
Environment
& Heritage



Water
Research
Laboratory
School of Civil and
Environmental Engineering



Tathra Beach (south)



Office of
Environment
& Heritage



Water
Research
Laboratory
School of Civil and
Environmental Engineering

-  Erosion 2010
-  Erosion 2050
-  Erosion 2100



250 m





Short Point Beach (north)

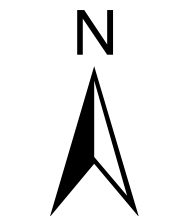
- Erosion 2010
- Erosion 2050
- Erosion 2100



Office of
Environment
& Heritage



Water
Research
Laboratory
School of Civil and
Environmental Engineering



250 m



Short Point Beach (south)



Office of
Environment
& Heritage

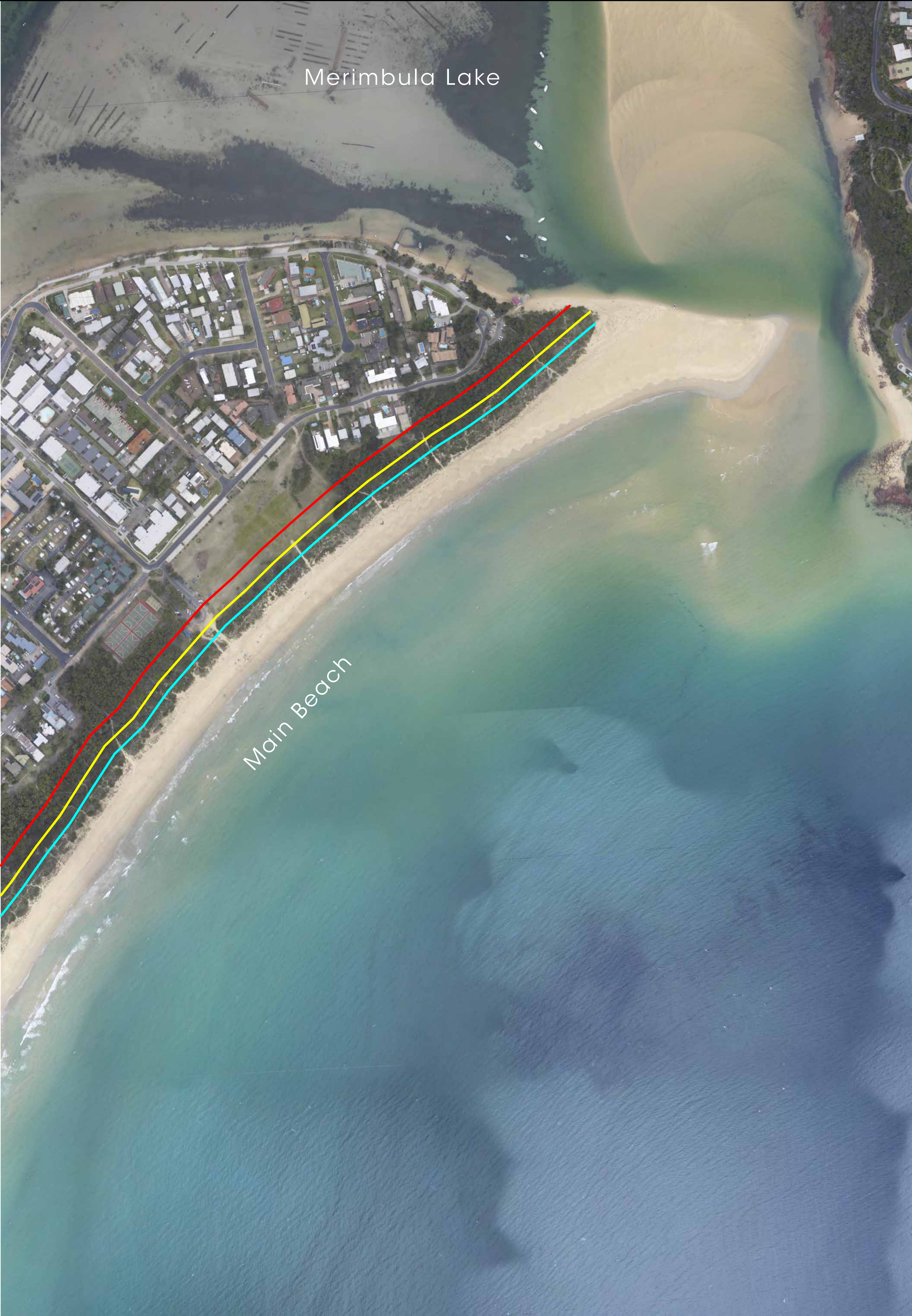


Water
Research
Laboratory
School of Civil and
Environmental Engineering

- Erosion 2010
- Erosion 2050
- Erosion 2100



250 m



Main Beach Merimbula



Office of
Environment
& Heritage

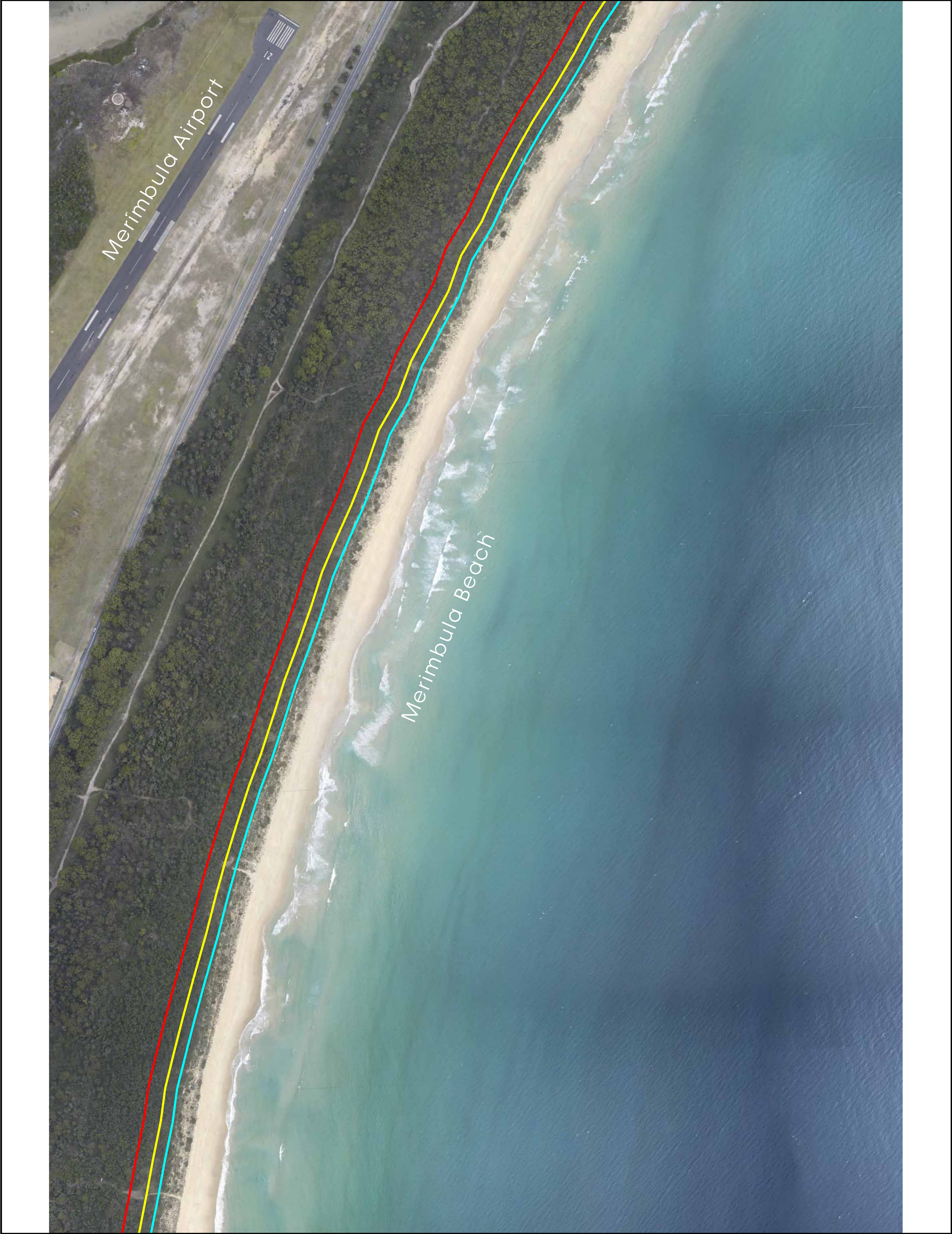


Water
Research
Laboratory
School of Civil and
Environmental Engineering

- Erosion 2010
- Erosion 2050
- Erosion 2100



250 m



Merimbula Beach (north)



Office of
Environment
& Heritage

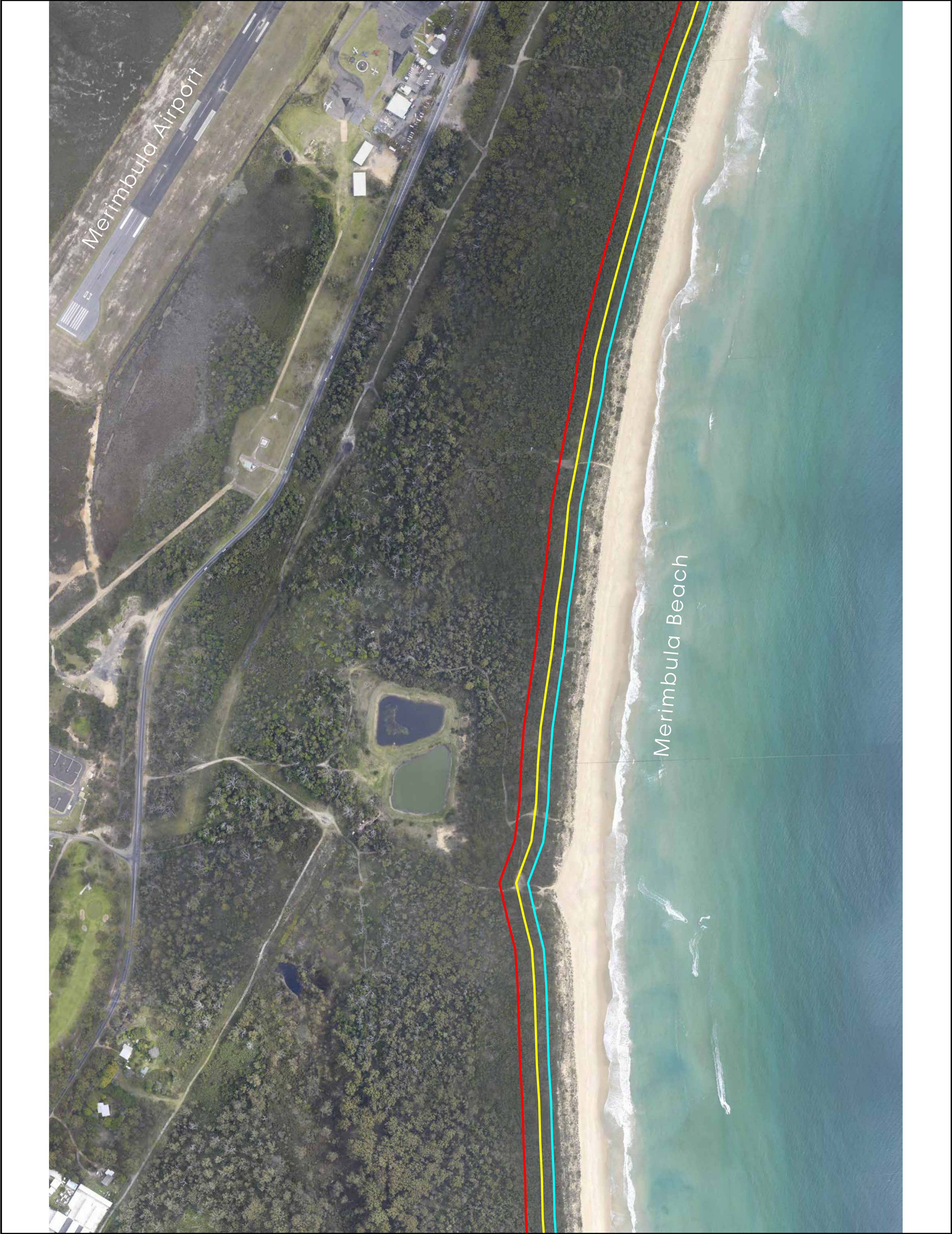


Water
Research
Laboratory
School of Civil and
Environmental Engineering

- Erosion 2010
- Erosion 2050
- Erosion 2100



250 m



Merimbula Beach (south)



Office of
Environment
& Heritage

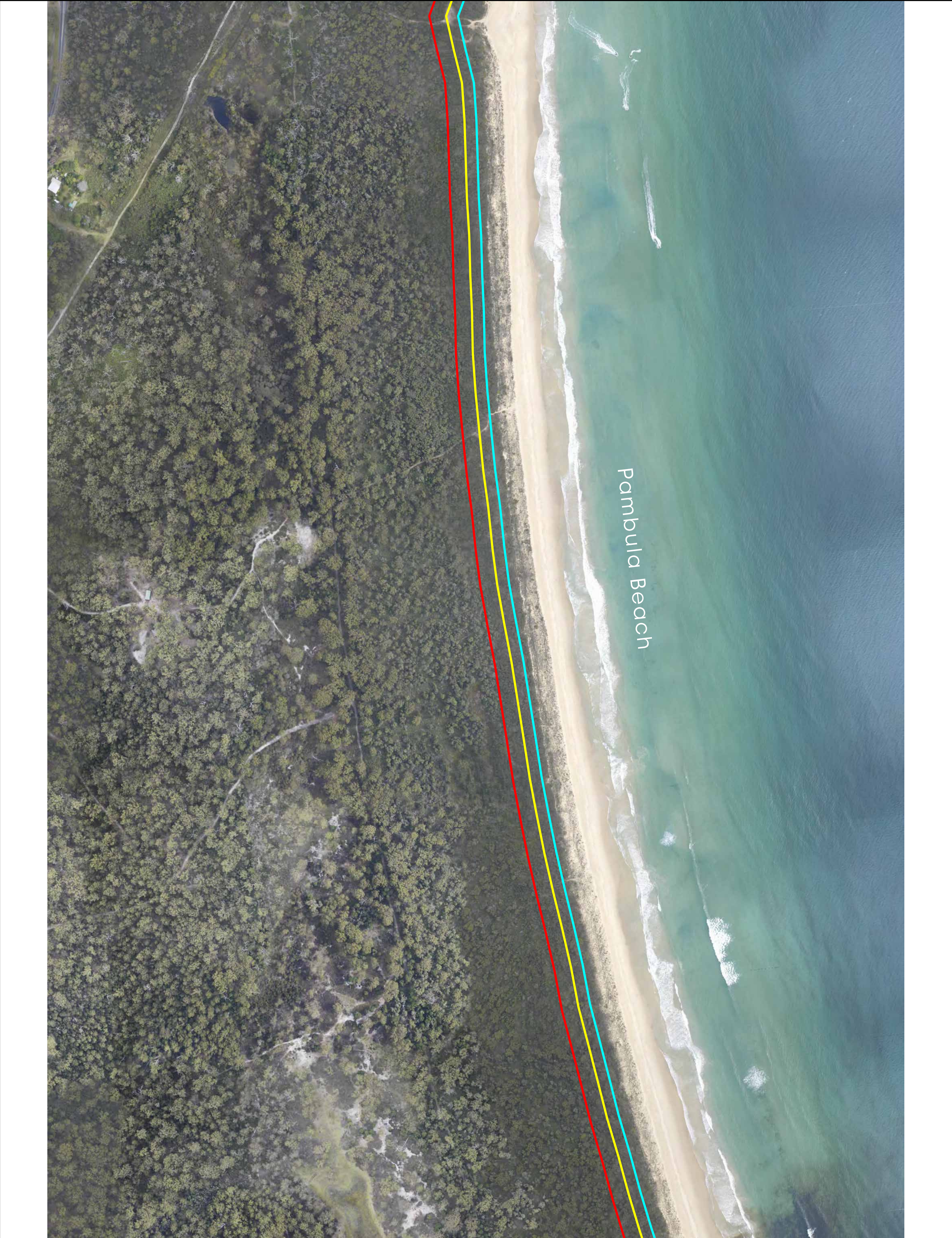


Water
Research
Laboratory
School of Civil and
Environmental Engineering

- Erosion 2010
- Erosion 2050
- Erosion 2100



250 m



Pambula Beach (north)



Office of
Environment
& Heritage



Water
Research
Laboratory
School of Civil and
Environmental Engineering

-  Erosion 2010
-  Erosion 2050
-  Erosion 2100



250 m





Pambula Beach (south)

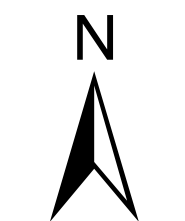


Office of
Environment
& Heritage

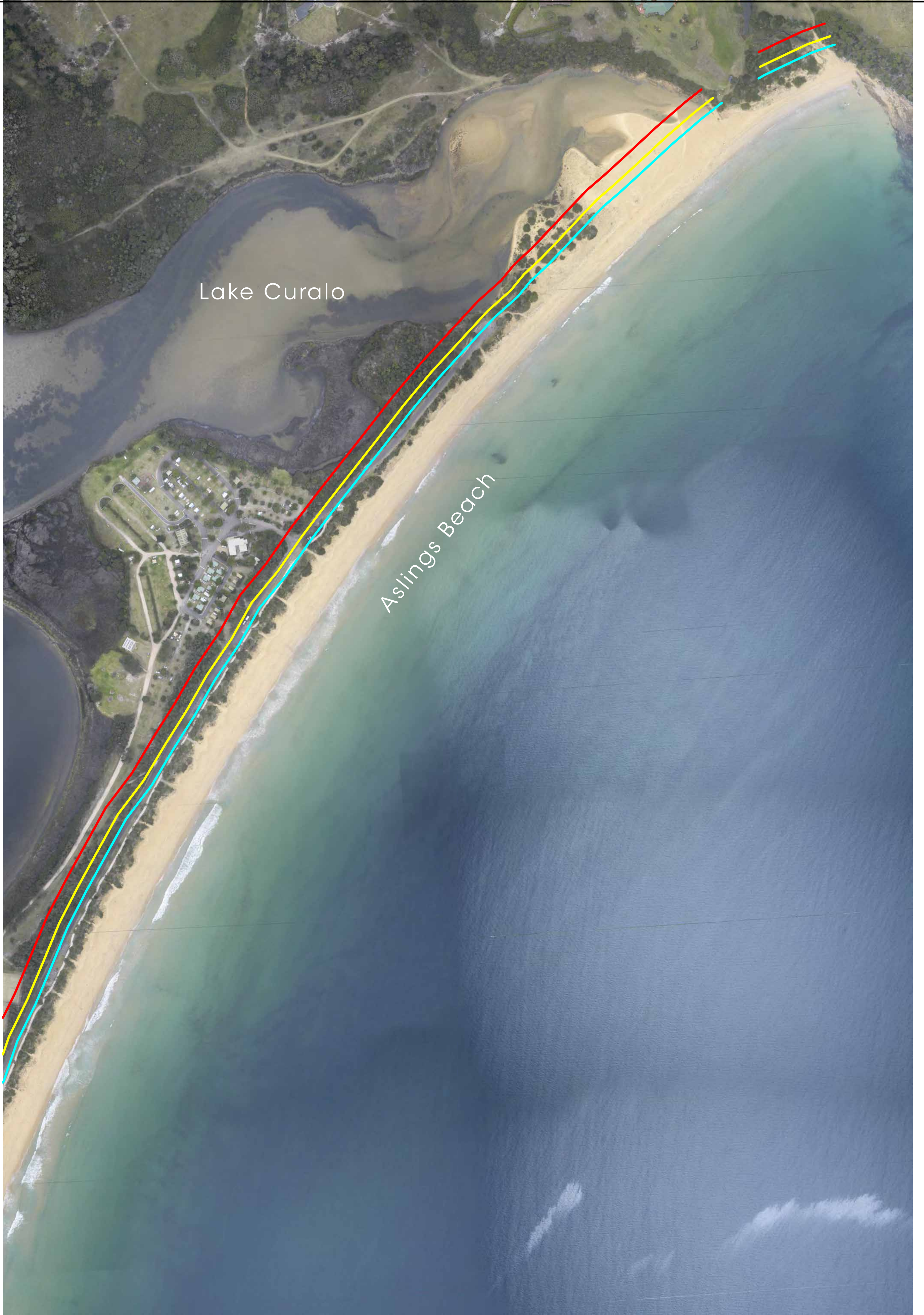


Water
Research
Laboratory
School of Civil and
Environmental Engineering

- Erosion 2010
- Erosion 2050
- Erosion 2100



250 m



Aslings Beach (north)



Office of
Environment
& Heritage



Water
Research
Laboratory
School of Civil and
Environmental Engineering

-  Erosion 2010
-  Erosion 2050
-  Erosion 2100



250 m



Aslings Beach (south)

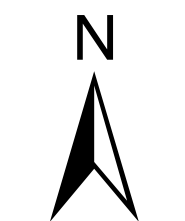


Office of
Environment
& Heritage



Water
Research
Laboratory
School of Civil and
Environmental Engineering

- Erosion 2010
- Erosion 2050
- Erosion 2100



250 m



Erosion 2010

Erosion 2050

Erosion 2100



250 m

Snug Cove - Cocora Beach



Office of
Environment
& Heritage



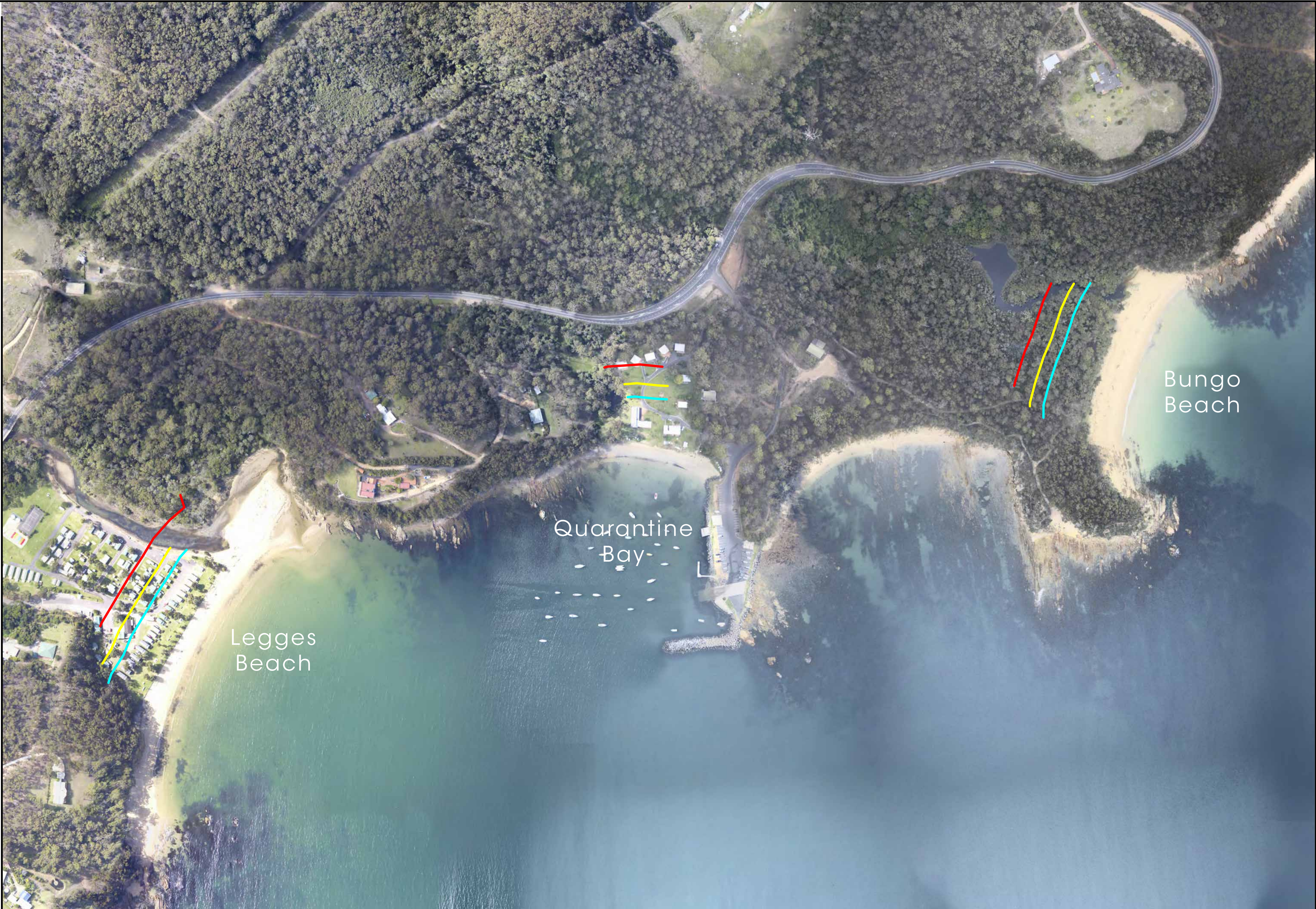
Water
Research
Laboratory
School of Civil and
Environmental Engineering



Erosion 2010

Erosion 2050

Erosion 2100



Bungan Beach

Quarantine Bay

Legges Beach

250 m

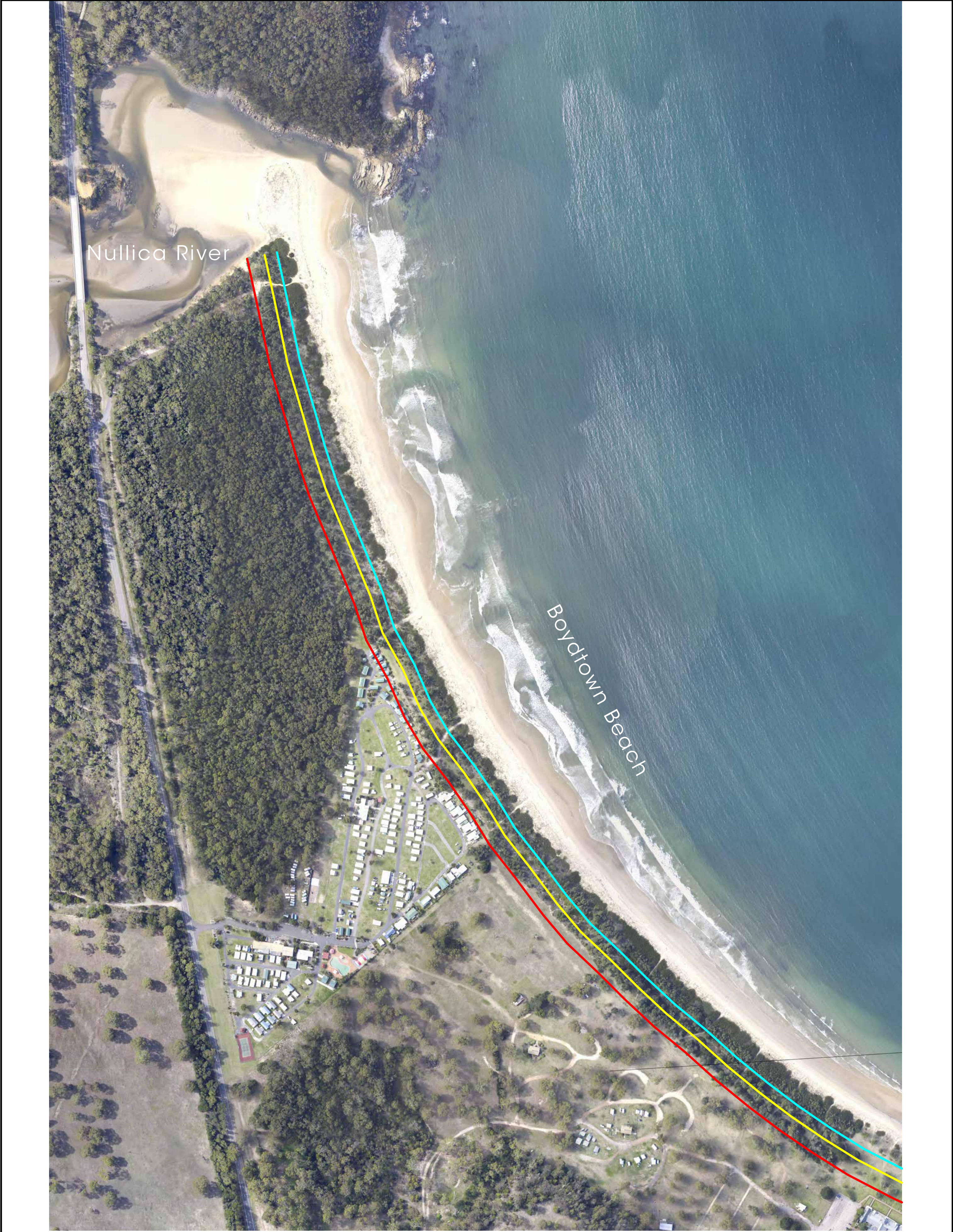
Bungan Beach - Legges Beach



Office of
Environment
& Heritage



Water
Research
Laboratory
School of Civil and
Environmental Engineering



Boydtown Beach (north)

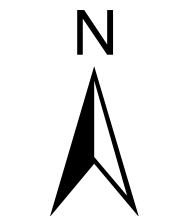


Office of
Environment
& Heritage



Water
Research
Laboratory
School of Civil and
Environmental Engineering

- Erosion 2010
- Erosion 2050
- Erosion 2100



250 m



Boydtown Beach (south)

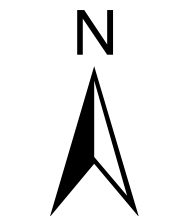


Office of
Environment
& Heritage



Water
Research
Laboratory
School of Civil and
Environmental Engineering

- Erosion 2010
- Erosion 2050
- Erosion 2100



250 m



Erosion 2010

Erosion 2050

Erosion 2100



250 m

Whale Beach (north)



Office of
Environment
& Heritage



Water
Research
Laboratory
School of Civil and
Environmental Engineering



Erosion 2010

Erosion 2050

Erosion 2100



250 m

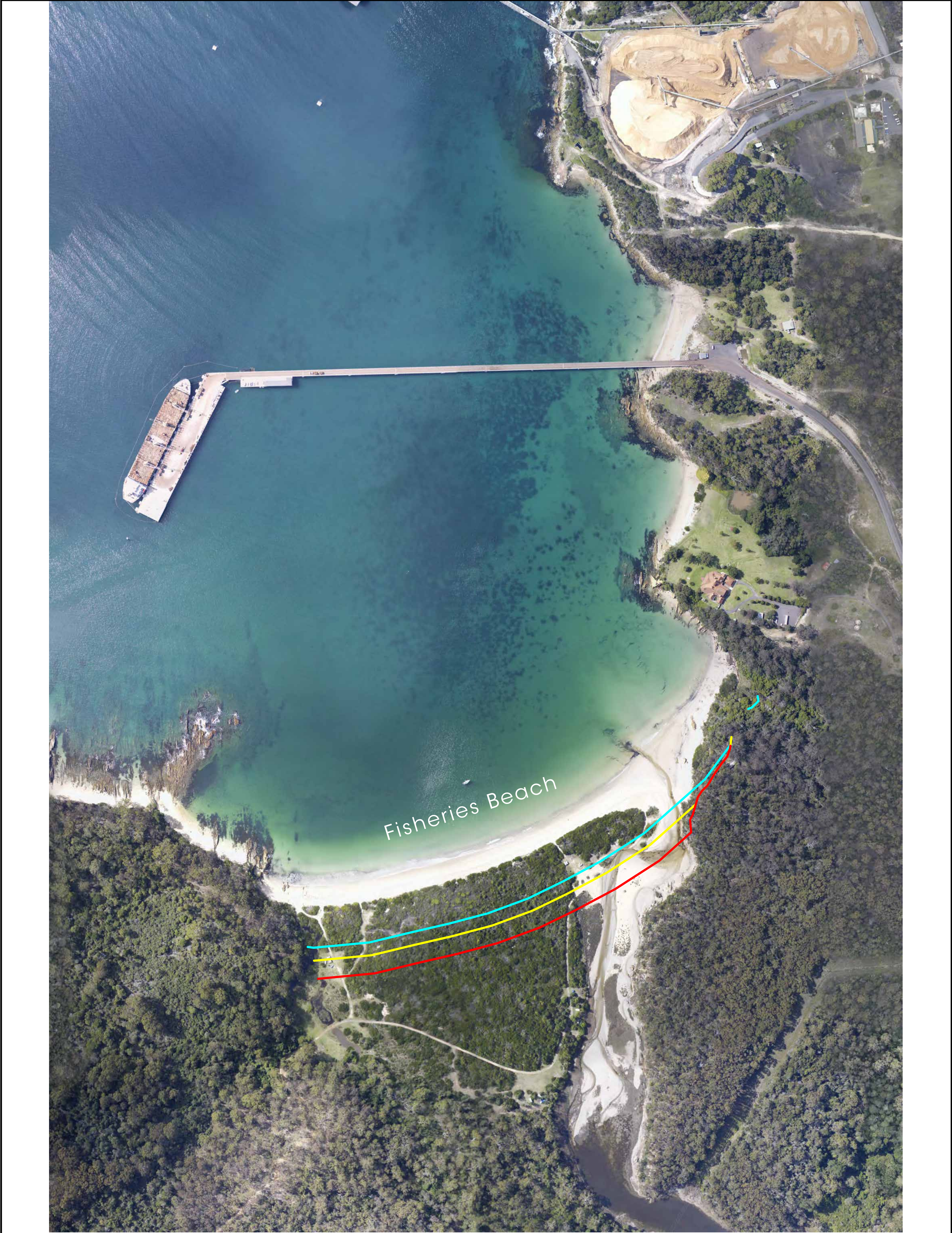
Whale Beach (south)



Office of
Environment
& Heritage



Water
Research
Laboratory
School of Civil and
Environmental Engineering



Fisheries Beach

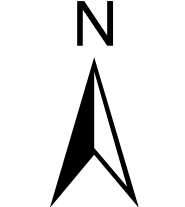


Office of
Environment
& Heritage



Water
Research
Laboratory
School of Civil and
Environmental Engineering

- Erosion 2010
- Erosion 2050
- Erosion 2100



250 m

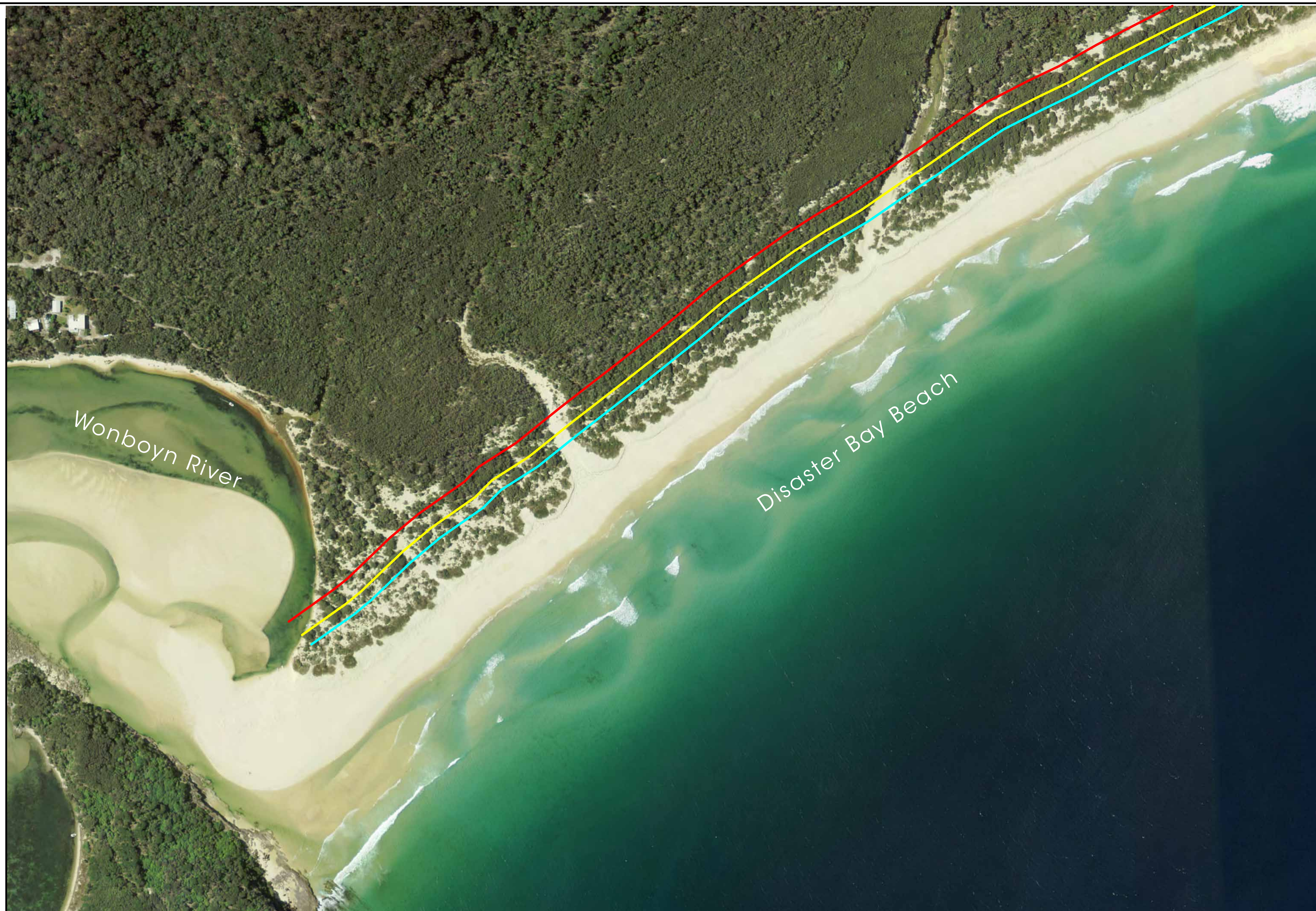




Erosion 2010

Erosion 2050

Erosion 2100



250 m

Disaster Bay Beach (south)



Office of
Environment
& Heritage



Water
Research
Laboratory
School of Civil and
Environmental Engineering